

Lakes Estate Renewal Project

Construction Phase Newsletter

Issue 14 | March 2025

Welcome to the 14th edition of our monthly newsletter.

FREE TRAINING FOR RESIDENTS

We are making the following e-courses available **FREE** to local residents on a **first come, first served** basis:

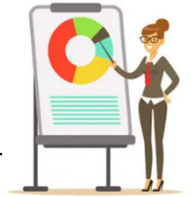
- Asbestos Awareness – Working with Asbestos and complying with Control of Asbestos Regulations 2012 (CAR 2012)
- Manual Handling (HSQE) – Minimising and controlling the risks that manual handling presents
- Fire Warden/Marshal (IOSH) - Become a fully-trained Fire Warden or Marshal

The above courses are accredited, and learners will receive a Certificate at completion.

In addition to the above three courses, we are also funding a small cohort (**first come, first served**) for

- Traffic Marshal/Banksman Course (HSE) - Control vehicles on and around site including; labourers, supervisors and managers. Also useful for events & festivals (available as an e-course)

You will receive a Certificate following completion, followed by an ID card via post within a week of course completion.



SUMMER ACADEMY PROGRAMME

If you are over 18 years old and currently studying a Construction-related course at Level 3 and above, you may be eligible for our paid Summer Academy Programme. Places are extremely limited.

WORK EXPERIENCE

If you are in Year 10 and looking for an employer to host your work experience placement, look no further!
We are running work experience programmes this Spring and Summer.

BUSINESS COACHING & MENTORING

Our next mentoring session is on Thursday 8th May 2025 at midday, via MS Teams, with the theme of 'Project Budget Management for Small Businesses'.

This session will cover:

- Budget Planning and Estimation
- Best practice/case study examples
- Q&A and individual business advice
- Budgeting tools and templates/software
- Managing cash flow and keeping good records



The session will be curated and delivered by a experienced Commercial Manager.

* * * GET INVOLVED * * *

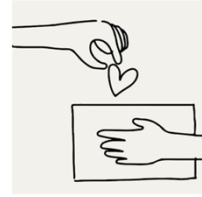
If you would like to get involved in any of the above, please email the Social Value team at localopps@graham.co.uk

COMMUNITY AND LASTING IMPACT INNOVATION FUND

We are pleased to announce the successful applicants of the Community and Lasting Impact Innovation Fund.

The organisations are as follows:

- Jo's Hope for All
- Bletchley Youth Centre
- The Cross Links Centre
- Lakes Estate Renewal Forum (LERF)
- Bishop Parker Catholic School and Nursery



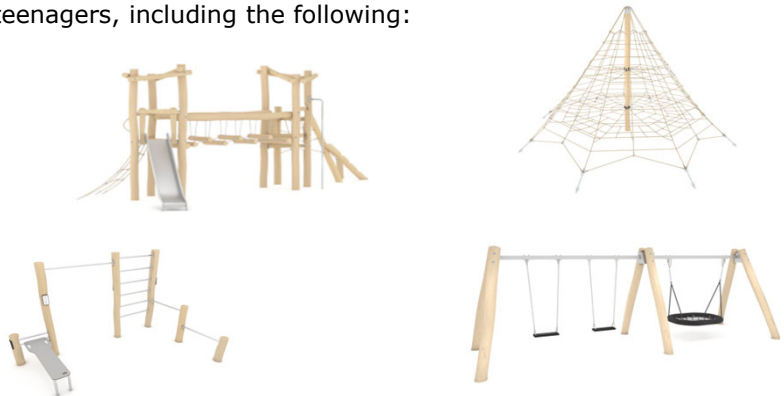
Congratulations to these organisations. We look forward to seeing their initiatives come to life and are confident in the impact they'll have in our local community.

WARREN PARK PLAY EQUIPMENT CONSULTATION

Following on from previous consultations, the design for the new Warren Park play equipment has been drawn up.

There are facilities for all, from pre-schoolers to teenagers, including the following:

- Multi-Use Games Area (MUGA)
- 'Pump' track for wheeled pursuits
- Play Terrace including (but not limited to):
 - Spiders Web Climbing Frame
 - Zip wire
 - Trim trail assault course
 - Trampoline
 - Swings
- There will also be 2 outdoor gym zones.

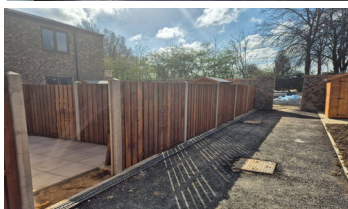


The consultation period was open from 1st to 15th April 2025, with an open in-person consultation at Spotlight on 8th April, hosted by Tri, GRAHAM and Milton Keynes City Council.

Feedback from this consultation will be available in the next newsletter.

PROGRESS THIS MONTH

Progress has been going well this month on all 5 sites, with all houses watertight and internal works continuing well. Kitchens and bathrooms have now started to be fitted, along with complimentary tiling. External landscaping has commenced at multiple sites, including patios, sheds, fencing and planting.



LAKES ESTATE RENEWAL FORUM MEETING

The next Lakes Estate Renewal Forum (LERF) meeting will take place on Thursday 1st May from 6:30pm at Spotlight, 114 Serpentine Court, Lakes Estate, Bletchley, MK2 3QR.

CONTACT US

Resident Liaison Officer

Samantha Key – 07391 185430 (Out of hours if urgent - 02895 071 034)

buildingsouthcustomerrelations@graham.co.uk

Visit us at graham.co.uk

Site Office, GRAHAM, Windermere Drive, Bletchley, MK2 3NS

Microsite QR Code



SCAN ME

CONTRACTOR
AND SUPPLIER
PARTNER

CONSIDERATE
CONSTRUCTORS
SCHEME