

Osney Power Station

Construction Phase Newsletter

Issue no. 17 | October 2023

Dear neighbour

Welcome to the latest edition of our newsletter to keep you updated on the progress at Osney Power Station.

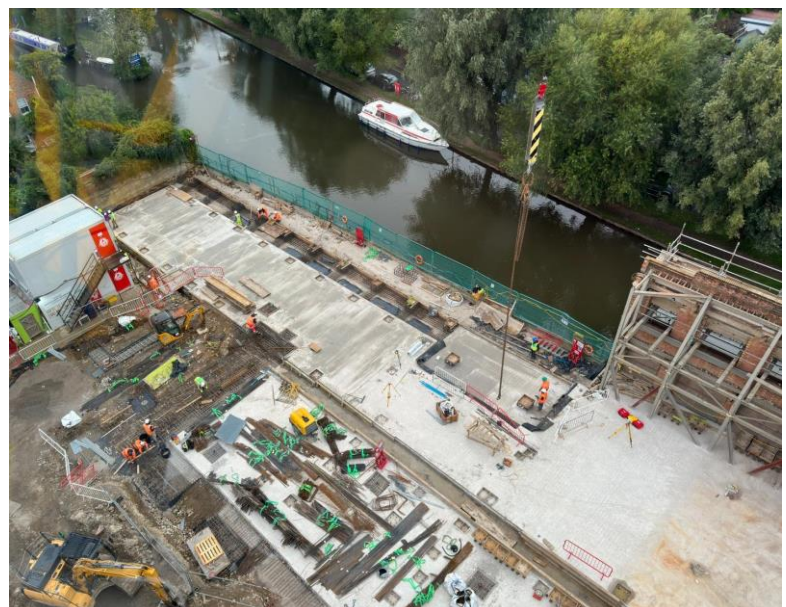
WORKS UPDATE

- Foundation and ground floor slab works that commenced in April are now approaching completion across the site.
- The steel frame commenced at the end of August at the North of the site and is progressing well. In the next couple of weeks erection of the frame will move riverside to the South-West corner of the site with the start to the new build section of the structure.
- Brickwork repairs to the existing building facades are continuing to the North and River façades.

LOOK AHEAD

- Steel frame erection will move to the South-West corner, riverside to enable the new build section of the frame to be erected in readiness for floor slabs and roof coverings.
- The Party Wall between the site and our neighbours to the South of the site will be removed and replaced as soon as we receive final confirmation from the Environment Agency to be able to commence

Thank you for allowing us to erect hoardings in your gardens. This is appreciated.



COMMUNITY ENGAGEMENT

Following recent feedback with the residents, there are three areas that require separate focus, to be able to manage neighbourly queries promptly, these are:

Normal Site Reporting

This relates to GRAHAM updates on site works, any standard changes to local conditions (i.e. road closures, deliveries, etc), and more standard resident issues such as dust and noise from site.

Specific Residents' Concerns

This relates to any properties that have raised any specific concerns and will be communicated directly with individuals by Graham Construction.

University & Business School Wider Support

This relates to additional community support the University & Business School are looking to provide to the community, such as local projects and options for use agreed use of the facility on completion of works.

It is therefore proposed that the reporting and management of these meetings are now separated out to allow the appropriate parties to action and respond in a timely manner, from now on the Project will be managing each of these areas separately.

Site Reporting

GRAHAM will continue to arrange resident briefs every two months; these will go back to being scheduled at the West Oxford Community Centre (OX2 0BT).

Next Meeting: **Tuesday 24th October 2023**
(17:30 – 18:30)

The point of contact for any site related issue (i.e., noise, traffic, etc) will be GRAHAM Project Manager (Andrew Gardner).

Any comments should be sent by e-mail to: osneypowerstation.enquiries@graham.co.uk

Specific Residents' Concerns

GRAHAM will continue to progress this directly via correspondence, outside of general resident meetings.

University & Business School Support

The Business School will be running quarterly meetings at the SAID Business School with members of the School and University present.

Intent is to discuss how the School and University is intending to support the local community during the development and on completion of the scheme.

It is intended to plan the first meeting in November 2023, details will be confirmed by the School in the next newsletter.

OUR COMMITMENTS

- Work with our neighbours to reduce the impact our work has on local business and the community
- Monitor noise, vibration and dust to ensure they are kept within the permitted levels
- Ensure a traffic management system is in place and maintain a safe working environment at all times, especially for our neighbours along Arthur Street, Russell Street and Mill Street
- Support the local community through employment, buying from local suppliers and proactive stakeholder engagement

KEEP UP TO DATE



SCAN ME

Keep up to date with the latest news by scanning the QR code:

CONTACT US

osneypowerstation.enquiries@graham.co.uk

CONTRACTOR
AND SUPPLIER
PARTNER

CONSIDERATE
CONSTRUCTORS
SCHEME